

Solar protection

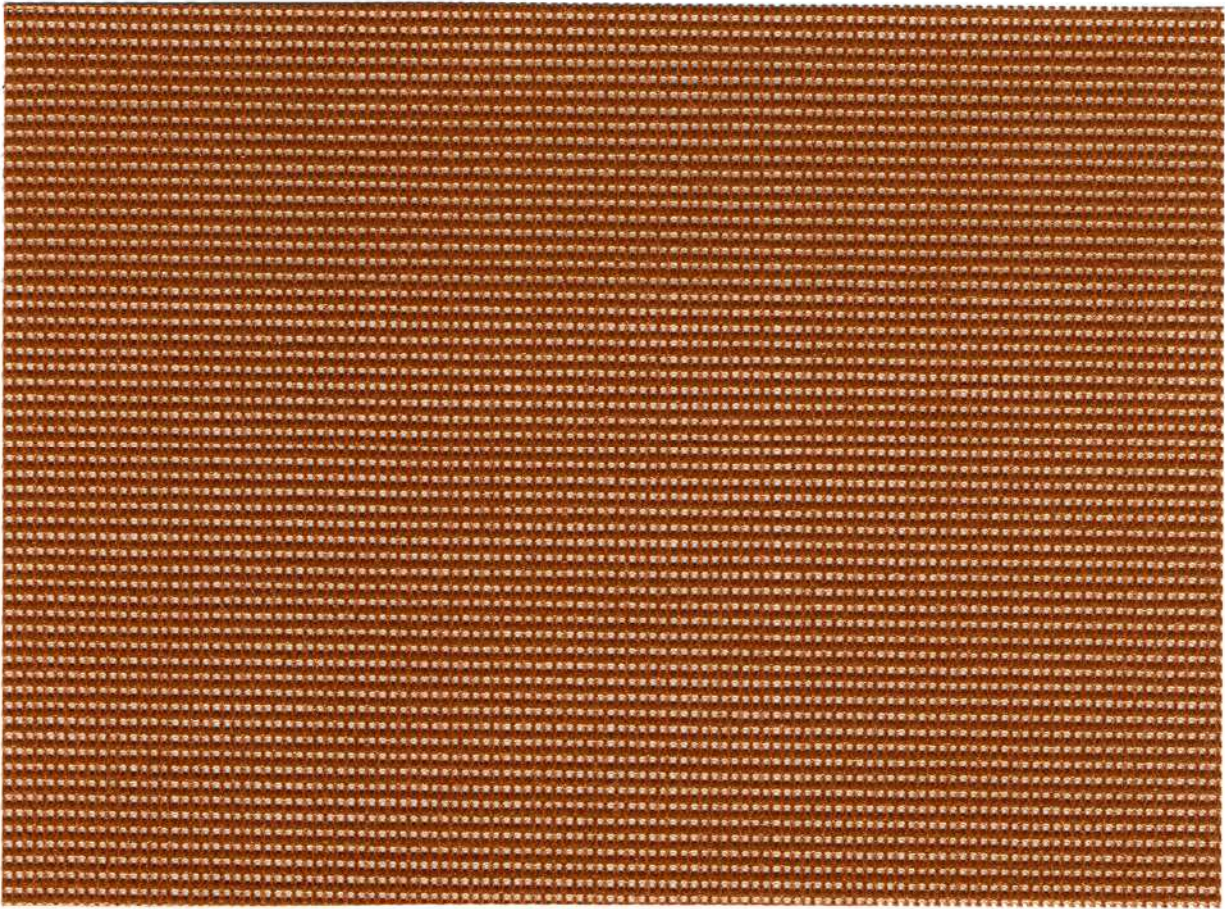


www.ferrari-architecture.com

SOLTIS[®] 86 & 92

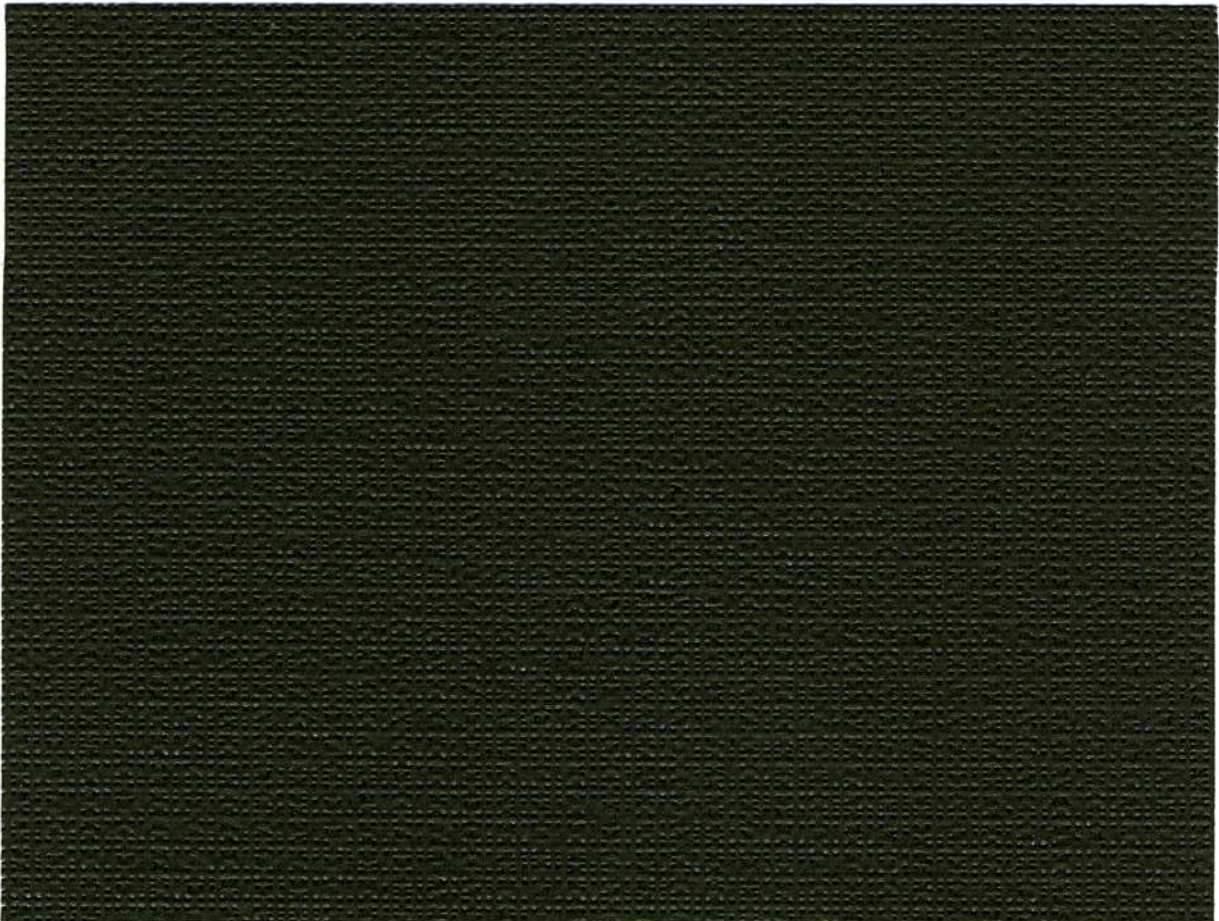
FERRARI
architecture





86-2077

New 86-3077*



92-2043**

SOLTIS® 86

■ Unique shade fabrics with stability and a view

Soltis® textiles offer the best of both worlds under the sun. Keeping your view of the outside world as well as reducing your interior cooling costs. With the increase of energy prices, people across the world are protecting their internal environment with the use of Soltis® products.

Manufactured according to the exclusive Précontraint® Ferrari® patented technology, Soltis® textiles are maintained under tension during the whole production process. The result is a very important dimensional stability of Soltis® textiles which do not sag during installation procedure or intensive uses.

Metallic colors



86-2046 **New** 86-3046*



86-2048



86-2078



86-2040



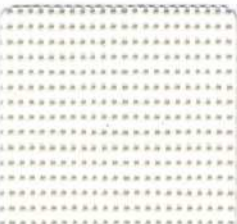
86-2045 **New** 86-3045*



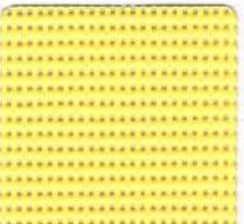
86-2043 **New** 86-3043*



86-2035



86-2044 **New** 86-3044*



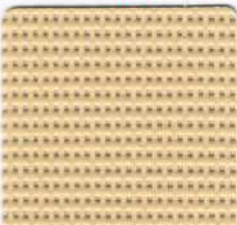
86-2006



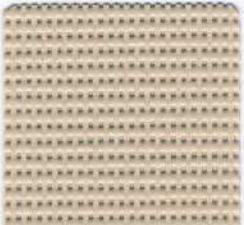
86-2024



86-2027



86-2002 **New** 86-3002*



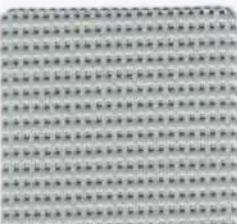
86-2003 **New** 86-3003*



86-2012 **New** 86-3012*



86-2030



86-2011 **New** 86-3011*



86-2069



86-2047 **New** 86-3047*



86-2053 **New** 86-3053*

* **New** = roll-width 105.1 inches
All Soltis® 86 colors are also available in Soltis® 92.

SOLTIS® 92

Metallic and interferential colors



92-2046**



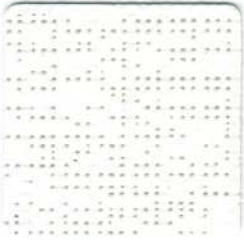
92-2074



92-2048**



92-2045**



92-2044**



92-2065 interferential
red/green



92-2070 interferential
grey/blue



92-2089



92-2088



92-2002**



92-2003**



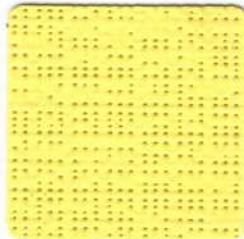
92-2012**



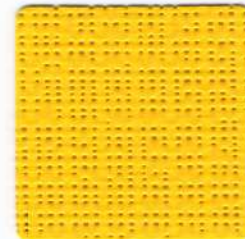
92-2090



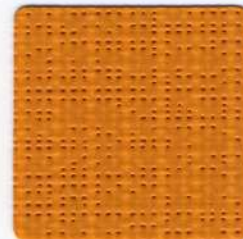
92-2039



92-2006**



92-2024**



92-2025



92-2027**



92-2035**



92-2016



92-2021



92-2031



92-2030**



92-2040**



92-2010



92-2011**



92-2069**



92-2047**



92-2053**

** This color is also available in Soltis® 86

Solar and light properties (according to ASHRAE 74-1988)

	Reference	TS	RS	AS	TV	FS ext. 1/4' CL	FS int. 1/4' CL	NCS Code
SOLTIS 86								
	86-2002	24	45	31	22	0.28	0.47	2010 Y 30 R
	86-2003	22	42	36	21	0.27	0.48	2005 Y 50 R
	86-2006	29	56	15	26	0.31	0.40	0030 Y 10R
	86-2011	19	34	47	19	0.25	0.53	2502 B
	86-2012	24	41	35	19	0.29	0.50	4010 Y 30 R
	86-2024	30	48	22	23	0.33	0.46	0765 Y 17 R
	86-2027	26	41	33	19	0.30	0.50	1473 Y 95 R
	86-2030	23	19	58	20	0.30	0.64	5050 R 70 B
	86-2035	19	18	63	19	0.27	0.64	4837 B 77 G
	86-2040	16	11	73	18	0.25	0.68	6020 R 90 B
	86-2043	14	9	77	17	0.23	0.69	7404 Y 51 R
	86-2044	30	56	14	26	0.32	0.41	0501 Y 17 R
	86-2045	18	24	58	21	0.25	0.60	/
A	86-2046	19	37	44	19	0.25	0.51	/
B	86-2046	19	54	27	19	0.23	0.40	/
	86-2047	13	6	81	16	0.23	0.71	/
	86-2048	20	34	46	21	0.26	0.53	/
	86-2053	15	4	81	18	0.25	0.73	S 8500 N
	86-2069	16	18	66	18	0.24	0.64	S 4502 B
	86-2077	18	37	45	17	0.24	0.51	/
	86-2078	22	35	43	21	0.28	0.53	/
SOLTIS 92								
	92-2002	10	55	35	6	0.14	0.37	2010 Y 30 R
	92-2003	10	51	39	6	0.15	0.40	2005 Y 50 R
	92-2006	14	70	16	8	0.16	0.28	0030 Y 10 R
	92-2010	10	57	33	7	0.14	0.36	1502 B
	92-2011	7	42	51	5	0.13	0.45	2502 B
	92-2012	12	50	38	4	0.17	0.41	4010 Y 30 R
	92-2016	11	48	41	5	0.16	0.42	3010 G 30 Y
	92-2021	9	34	57	5	0.16	0.51	4030 R 90 B
	92-2024	19	61	20	10	0.22	0.35	0765 Y 17 R
	92-2025	15	51	34	5	0.19	0.41	2060 Y 40 R
	92-2027	14	51	35	5	0.18	0.41	1473 Y 95 R
	92-2030	7	26	67	4	0.15	0.56	5050 R 70 B
	92-2031	10	31	59	6	0.17	0.53	3060 R 80 B
	92-2035	5	22	73	4	0.14	0.58	4837 B 77 G
	92-2039	3	7	90	4	0.13	0.68	8010 B 90 G
	92-2040	3	13	84	4	0.13	0.64	6020 R 90 B
	92-2043	4	10	86	4	0.14	0.66	7404 Y 51 R
	92-2044	18	66	16	12	0.20	0.31	0501 Y 17 R
	92-2045	5	29	66	6	0.13	0.54	/
A	92-2046	7	40	53	5	0.13	0.47	/
B	92-2046	7	52	41	5	0.12	0.38	/
	92-2047	3	6	91	3	0.14	0.69	/
	92-2048	6	40	54	5	0.12	0.46	/
	92-2053	4	4	92	4	0.15	0.71	8500 N
	92-2065	6	42	52	6	0.12	0.45	/
	92-2069	5	20	75	5	0.14	0.60	4502 B
	92-2070	3	34	63	5	0.10	0.50	/
A	92-2074	4	32	64	4	0.11	0.51	/
B	92-2074	4	21	75	4	0.13	0.59	/
	92-2088	7	40	53	5	0.13	0.47	/
	92-2089	9	40	51	6	0.15	0.47	/
	92-2090	4	11	85	4	0.14	0.66	7020 Y 40 R

TS: Solar Transmission in %

RS: Solar Reflection in %

AS: Solar Absorption in %

TS + RS + AS = 100% of incident energy

TV: Visible light Transmittance in %

FS ext.: external Solar Factor

FS int.: internal Solar Factor

1/4' CL: clear plate, thickness 6.4 mm (measured by Matrix Inc. U.S.A. according to ASHRAE 74-1988)

A: aluminum side exposed to the sun

B: color side exposed to the sun

SOLTIS® 92 SOLTIS® 86

Micro-ventilated textiles for solar protection

Main applications: Façade blinds
Conservatory and glassroof blinds - Shadesails

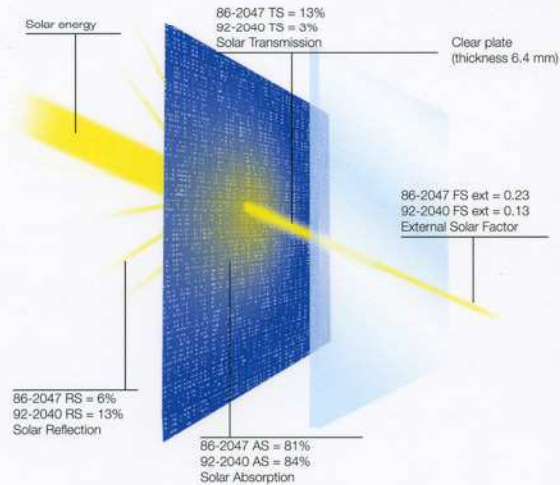
■ A real heat shield

Soltis® 86 & 92 textiles have a micro-ventilation system that regulates the sun's heating effects. When they are placed on the outside of windows they absorb and reflect back up to 97% of the heat contained in the sun's rays, thereby eliminating the greenhouse effect.

Such unrivalled thermal performances enable reduced use of air-conditioning in the building.

Soltis® 86 & 92 makes a strong contribution to reduced energy expenditure, allowing better cost control of the building.

Example of values given for color shade 86-2047 and 92-2040 (according to ASHRAE 74-1988 with clear plate, thickness 6.4 mm)



■ Doubly efficient: anti-glare and transparent



Spa center in Belzig - Germany



Offices in Landshut - Germany

Soltis® 86 & 92 textiles preserve privacy and comfort inside while providing visibility to the outside.

They offer natural lighting that promotes well-being for people, while eliminating glare. Soltis® 86 & 92 comes in a broad range of colors, each equally capable of controlling luminosity transmission, significantly improving the overall comfort of the building.

■ Metallic and interferential finishes

The metallic and interferential appearance of Soltis® 86 & 92 opens up new possibilities. Solar protection textiles thus become an architectural extension of the building's facade.

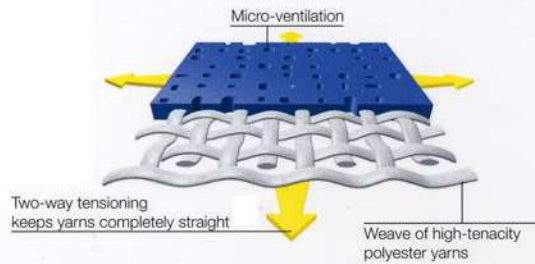
Soltis® 92 interferential is the only textile that changes color depending on the viewing angle. Changes may go from red to green, or from grey to blue — Soltis® 92 drapes and breathes life into facades.



Reuter's Agency, Geneva - Switzerland

■ The exclusive **Précontraint®**

Ferrari® technology



Made using the exclusive and patented Ferrari® Précontraint® technology; Soltis® textiles are manufactured under equal tension throughout the manufacturing cycle.

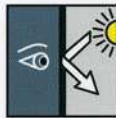
This value added benefit allows the textile to keep its shape and form when in constant daily use. Providing users with a product that combines strength with a lightweight product.

■ Technical features

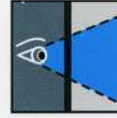
SOLTIS® 86 & 92



Thermal comfort



Visual comfort



Visibility toward the outside



Tear resistance



Won't sag



Space-saving



Long life



Easy maintenance



Flame retardant



100% recyclable textile



Solar protection

SOLTIS® 86 & 92

Technical properties	Soltis® 86	Soltis® 92	Standards
Weight	11.2 oz/sqyd	12.4 oz/sqyd	EN ISO 2286-2
Thickness	430 microns	450 microns	
Roll width New roll-width	69.7 inches 105.1 inches	69.7 inches	
Tensile strength (warp/weft)	230/160 daN / 5 cm	310/210 daN / 5 cm	EN ISO 1421
Tear strength (warp/weft)	45/20 daN	40/20 daN	DIN 53.363
Flame retardancy	CLASSE A/ASTM E84 • METHOD 1/NFPA 701 • CSFM T19 • M1/NFP 92-507 • B1/DIN 4102-1 • BS 7837 • BS 5867 • G1/GOST 30244-94 • 1530.3/AS/NZS • B1/ONORM A 3800-1 • CLASSE 1/UNI 9177-87 • M1/UNE 23.727-90 • VKF 5.2/SN 198898		
Euroclass	B-s2,d0/EN 13501-1		
Roll lengths 69.7 inches wide 105.1 inches wide	50 lm 40 lm	50 lm	
Fongistatic treatment	Degree 0, excellent	Degree 0, excellent	EN ISO 846-A
Quality management system	ISO 9001		

The technical data here above are average values with a +/- 5% tolerance.

The buyer of our products is fully responsible for their application and their transformation concerning any possible third party. The buyer of our products is responsible for their implementation and installation according to the standards, use and customs and safety rules of the countries where they are used. Concerning the contractual warranty, please refer to the text of our warranty.

The values here above mentioned are the results of tests performed in conformity with the use and customs in terms of studies; they are given as an indication in order to allow our customers to make the best use of our products. Our products are subject to evolutions due to technical progress; we remain entitled to modify the characteristics of our products at any time. The buyer of our products is responsible to check that the here above data are still valid.

www.soltis-textiles.com

By visiting you will be able to download project information, technical data, and many more things. All in real time.



Sustainable development

Ferrari® development is based on strict adherence to good safety and environmental practices, that include an understanding of Life Cycle Analysis (LCA), selection of the best materials, and eco-design.

The Company obtained its first ISO 14001 certification in 2003.

100% recyclable

Ferrari® developed the Taxyloop® technology specifically for the recycling of composite PVC membranes and textiles. Through the management of its end-of-life products Ferrari® is committed to sustainable development.

www.taxyloop.com

Specification service

The Ferrari® specification service is available to inform you, advise you and suggest innovative solutions for your specific requirements.

To detail your project, visit:

www.soltis-textiles.com

Come and fill out our project detail form.

CSI Specifications Available

TEXYLOOP®
A CLOSELOOP INDUSTRY

FERRARI



EUROPE

FERRARI SA
La Tour du Pin - FRANCE
Tel: +33 (0)4 74 97 41 33

STAMOID AG
Eglisau - SWITZERLAND
Tel: +41 (0)44 868 26 26

NORTH AMERICA

FERRARI TEXTILES CORP.
Florida - USA
Tel: +1 954 942 3600

LATIN AMERICA

FERRARI LATINOAMERICA S.A.
Santiago - CHILE
Tel: +56 (2) 269 0019

São Paulo - BRAZIL
Tel: +55 (11) 3262 3405

Mexico - MEXICO
Tel: +52 (55) 5525 2900

MIDDLE EAST

FERRARI DUBAI
Dubai - U.A.E
Tel: +971 4 886 5506

ASIA - PACIFIC

FERRARI HONG-KONG LTD
Tel: +852 3622 1340

FERRARI JAPAN Tokyo
Tel: +81(0)467 24 93 00

CHINA

FERRARI CHINA
Shanghai
Tel: +86 21 6211 6936